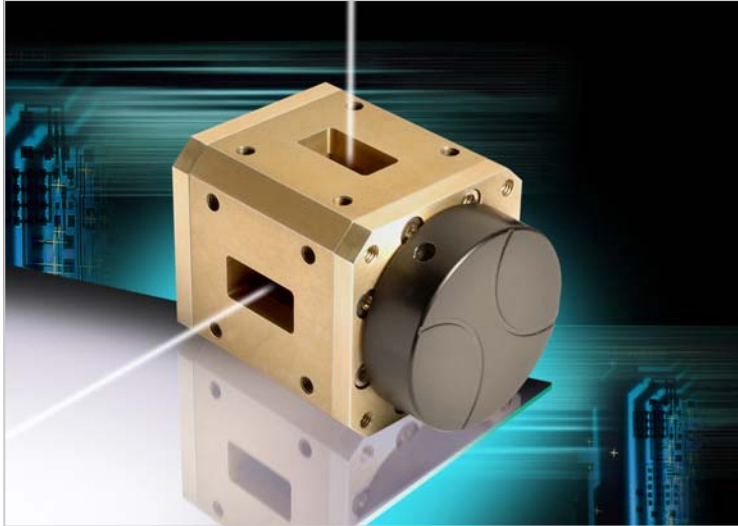


5th March 2009

## New waveguide switches offer manual or electrical operation



Link Microtek's Engineering Division has added waveguide transfer switches to the range of products it designs and manufactures at the company's premises in Basingstoke.

Offered in both manual and electrically operated versions, the AM-WGS series DPDT-configuration switches are available in rectangular waveguide sizes ranging from WR28 to WR284 and are suitable for applications such as satcom systems, redundancy switching and test and measurement.

These fast-switching devices feature an industry-standard footprint to ensure compatibility with other manufacturers' products, and available options include failsafe, latching and tellback operation. The electrically driven models can be supplied complete with a control unit, typically operating from a voltage of 24V DC.

Manufactured from aluminium, the AM-WGS switches have a power handling capacity of 5kW CW and can withstand up to 1 bar of internal pressure.

As well as offering individual switches, Link Microtek can also supply complete switch matrix assemblies based on multiple AM-WGS devices.

**Further information from:**

Steve Cranstone, Link Microtek Ltd  
Tel: +44 (0)1256 355771 Fax: +44 (0)1256 355118  
e-mail: [steve.cranstone@linkmicrotek.com](mailto:steve.cranstone@linkmicrotek.com)

**Issued by:**

Rick Bauling, RJB Communications  
Tel: +44 (0)1234 782255 Fax: +44 (0)1234 782744  
e-mail: [rbauling@rjbcoms.com](mailto:rbauling@rjbcoms.com)